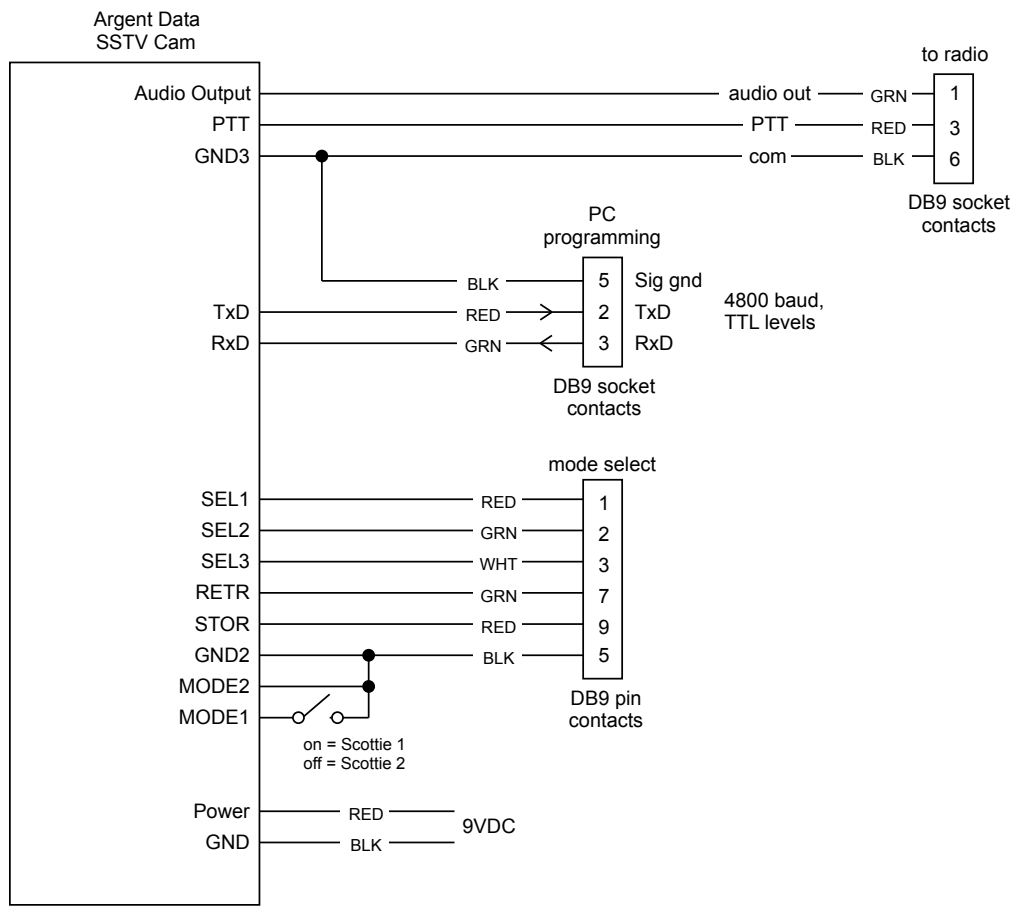


D

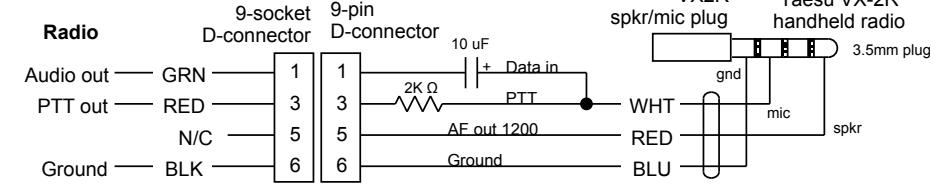
C

B

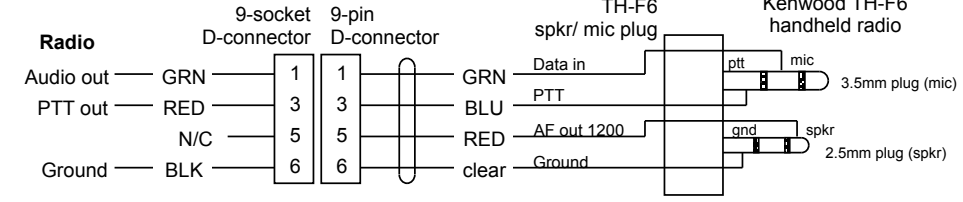
A



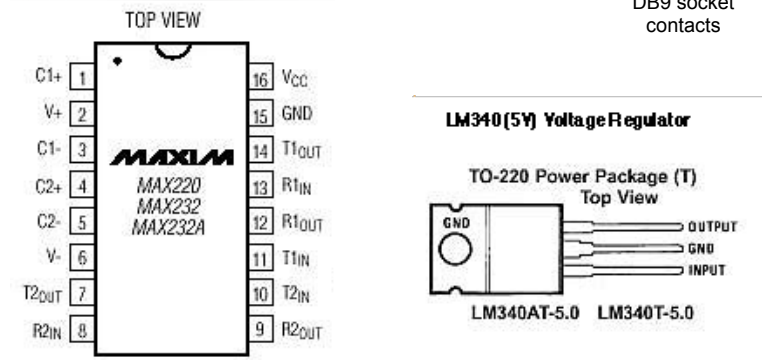
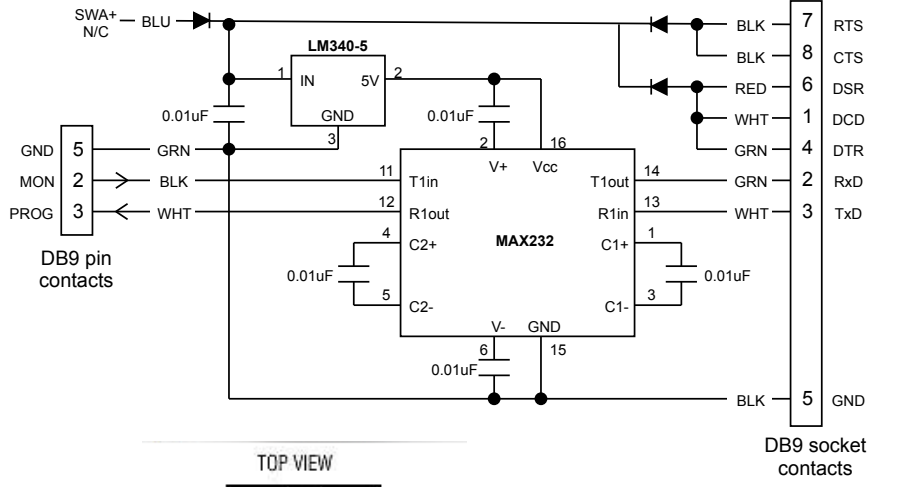
Yaesu VX-2R handheld radio connection diagram



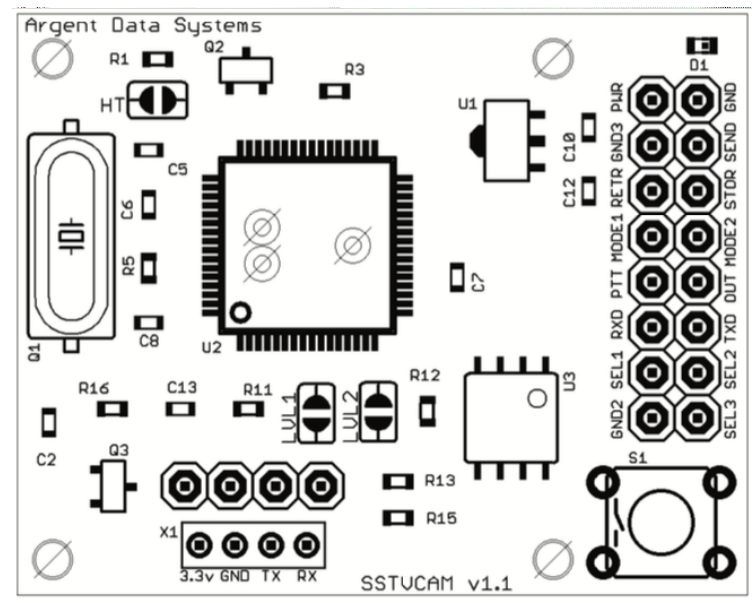
Kenwood TH-F6 handheld radio connection diagram



RS232 to TTL from radio interface box (RIB) diagram



- Drawing Index:**
- PM-E1000 General Wiring Diagram
 - PM-E1001 Primary Air-to-Ground Wireless Video Wiring Diagram
 - PM-E1002 Secondary Air-to-Ground Wireless Video Wiring Diagram
 - PM-E1003 I-Gate Station Wiring Diagram
 - PM-E1004 UHF Wireless Video Wiring Diagram
 - PM-E1005 Video Receive, Select, and Stream Wiring Diagram
 - PM-E1006 GPS and PulseOx to APRS Transmitter Wiring Diagram
 - PM-E1007 Weather Station Wiring Diagram
 - PM-E1008 Jumper 2-Way Radio Communications Wiring Diagram
 - PM-E1009 Jumper HF Communications Wiring Diagram
 - PM-E1010 Slow Scan Television SSTV Camera Wiring Diagram



- Pin Function**
- | | |
|-------|---------------------------------------|
| PWR | Power input - 5 to 15 volts DC |
| GND3 | Ground |
| RETR | Selects memory retrieve mode |
| MODE1 | Selects SSTV format |
| PTT | Open collector push-to-talk output |
| RXD | Serial data input (LVTTTL) - 3.3v max |
| SEL1 | Selects memory slot or timer interval |
| GND2 | Ground |
| SEND | Sends or stores a frame |
| STOR | Selects memory store mode |
| MODE2 | Selects SSTV format |
| OUT | Audio output |
| TXD | Serial data output (LVTTTL) |
| SEL2 | Selects memory slot or timer interval |
| SEL3 | Selects memory slot or timer interval |
- Jumper Function**
- | | |
|-----|------------------------------|
| HT | Selects handheld PTT mode |
| SJ1 | Increases audio output level |
| SJ2 | Increases audio output level |
- MODE1 MODE2 Format**
- | | | |
|-----|-----|-----------|
| Off | Off | Robot 36 |
| on | Off | Robot 72 |
| Off | On | Scottie 2 |
| On | On | Scottie 1 |

- DB-9 PC serial port (direction):**
- DCD Carrier Detect (to PC)
 - RxD Receive Data (to PC)
 - TxD Transmit Data (from PC)
 - DTR Data Terminal Ready (from PC)
 - Signal Ground
 - DSR Data Set Ready (to PC)
 - RTS Request To Send (from PC)
 - CTS Clear To Send (to PC)
 - Ring Indicator (to PC)

NOTES: UNLESS OTHERWISE SPECIFIED

1 APPLY

2

SEL1	SEL2	SEL3	Delay
Off	Off	Off	0 seconds
on	Off	Off	10 seconds
Off	On	Off	30 seconds
On	On	Off	60 seconds
Off	Off	On	120 seconds
On	Off	On	300 seconds
Off	On	On	600 seconds
On	On	On	1200 seconds

REV	DATE	REVISION DESCRIPTION	DRAWN	APP
1	12-12-17	wiring changes, added Max232 RIB schematic	MF Wright	
0	12-6-17	initial release	MF Wright	

PARACHUTE MOBILE "In The Air, On The Air"
www.parachutemobile.org

Parachute Mobile Communication Systems
Slow Scan Television SSTV Camera
Wiring Diagram

DRAWN MF WRIGHT	CHK MF WRIGHT	INDEX Video Ops	FSCM. NO.	LIMITS UNLESS NOTED
DESIGN ENGR MF WRIGHT	TEAM POSITION MF WRIGHT	AS DWG NO Sheet 1 of 1	DATE 12-12-17	REV 1
NEXT ASSY	USE ON	CONSULTANT MF WRIGHT	SCALE NONE	
APPLICATION	TEAM COORDINATOR R. FENN	PM-E1010		

FILE NAME: ParachuteMobile_E1010